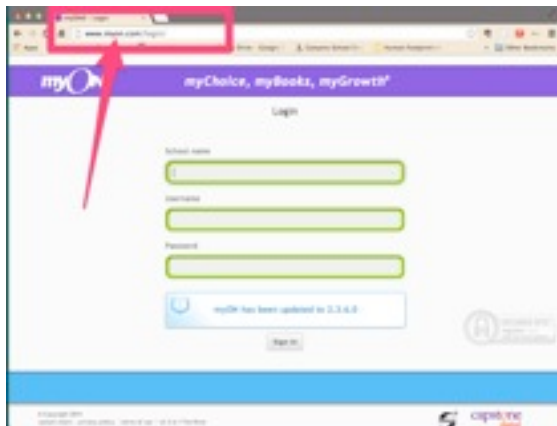




Logging into MyOn & Viewing Student Details and Data

Canyons School District
Education Technology Department
9361 S. 300 E.
Sandy, UT 84070
Help Desk: 801-826-5544

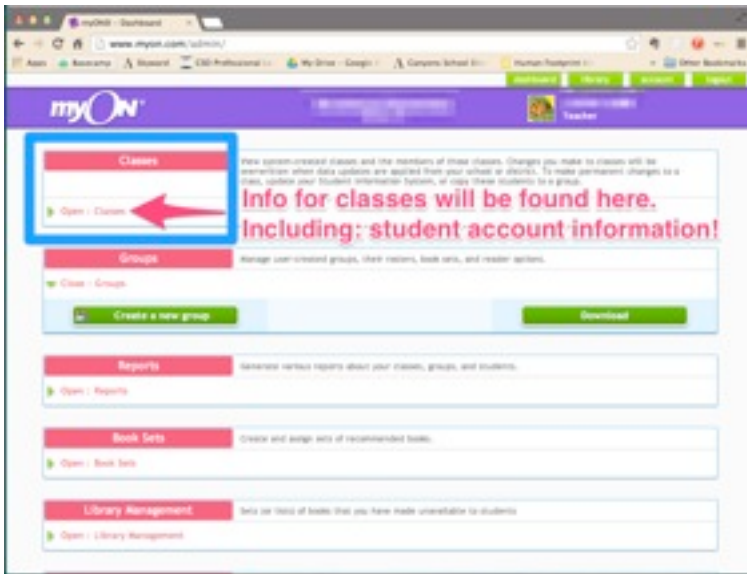


1. Log into MyOn at www.myon.com/login.

2. Find the name of the school as you begin typing it. Select it from the list.

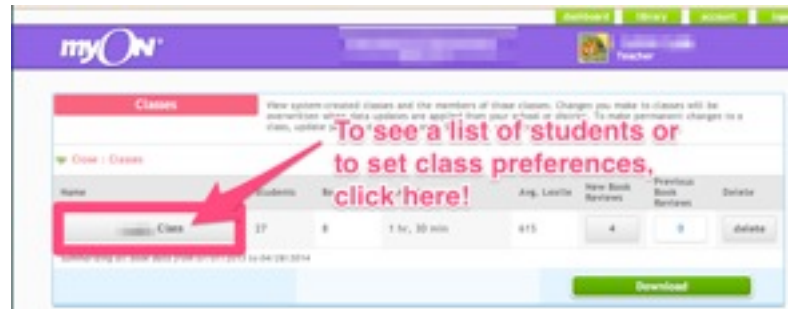


3. Use your whole email and password to sign in to your **TEACHER ACCOUNT**.



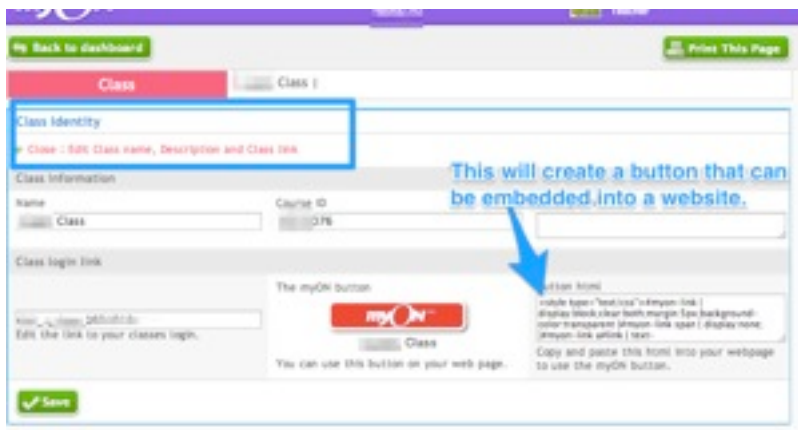
4. To see student account info click “classes”.

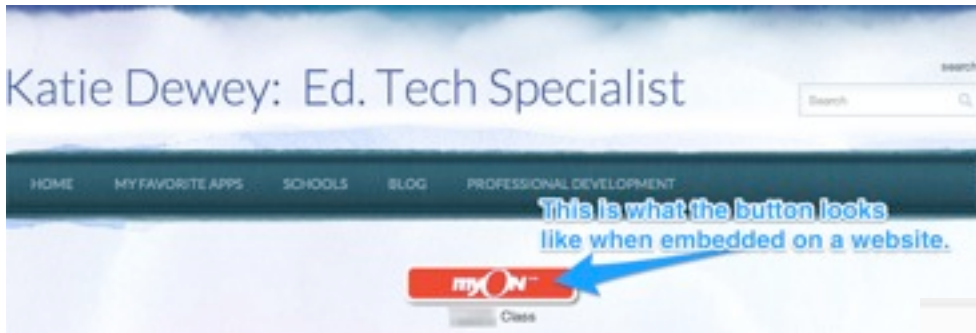
5. Once “classes” is opened, you can click the button to open your class or create a link for your website to your class’s MyOn page.



6. If you open this tab, you can see some options at the top, but scrolling down will reveal the students in your class.

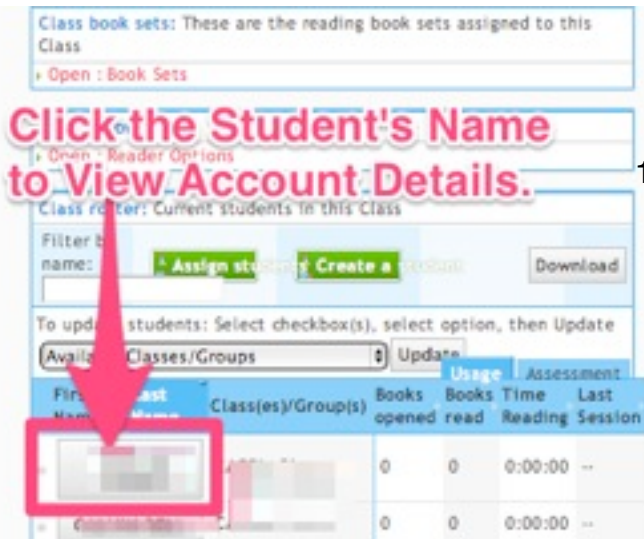
7. You can create a link to your MyOn page by embedding (copying and pasting) the code shown here on your website..





8. See this example of the button that is on my website to link my students to my MyOn page.

9. See the location of the students on this page when you scroll down.



10. Click the student's name to view account details.

11. To see the Student's Account info- their log in is the student number. The password can be provided by your Ed Tech.

